



**RCI-CRE Status Approved**

**NAMS-CME and INC** (Approval in process)

# 1<sup>st</sup> National Conference on **PSYCHOTHERAPEUTIC ASSESSMENTS AND INTERVENTIONS IN PSYCHO-ONCOLOGY** (NCPO-2025)

**Focal Theme: A Multidisciplinary Approach to Holistic  
and Integrated Cancer Care**

**Organized By: AIIMS, New Delhi**

Department of Psychiatry

Department of Medical Oncology

Department of Onco-Anaesthesia and Palliative Medicine

Department of Radiation Oncology

College of Nursing

**Organizing Partner:**

**We Avec U Foundation, New Delhi**

**3<sup>rd</sup> to 5<sup>th</sup> January, 2025**

**JLN Auditorium, AIIMS, New Delhi**

PUBLICATION  
PARTNERS:



Taylor & Francis Group  
an informa business



CRC Press  
Taylor & Francis Group

**[www.ncpo2025.in](http://www.ncpo2025.in)**

## ABOUT THE HOST AND VENUE



The conference will be held at the All India Institute of Medical Sciences (AIIMS), New Delhi- a multi-specialty largest public hospital and medical college in India. Established in 1956, it is the premier medical institute of India and is an institute of national importance. AIIMS New Delhi was ranked 123rd in the world in 2023 and first in South Asia in the category of Life Sciences and Medicine by QS W U R in 2022. The institute was also featured in the World's best hospital 2020- Top 100 by Newsweek and ranked 22nd in the world by CEO world Magazine in 2022. AIIMS, New Delhi is a sprawling campus that is situated in the heart of New Delhi.

## CONCEPT NOTES

In the field of psycho-oncology, the importance of psychological assessments and interventions cannot be overstated. Psychological evaluation and assessments play a crucial role in understanding the psychological impact of cancer diagnosis and treatment on patients. These assessments help identify emotional distress, coping mechanisms, and support needs of individuals facing cancer, allowing for tailored interventions to be implemented. This national conference aims to address the psychological and emotional challenges that cancer patients may experience, such as anxiety, depression, fear, and existential distress. By providing psychological support and counselling, these interventions can help patients navigate the complex emotions associated with their diagnosis and improve their overall quality of life. Furthermore, psychological assessments and interventions in psych oncology contribute to holistic cancer care by addressing the mental health aspect of the disease. They not only support patients in coping with the emotional burden of cancer but also enhance their resilience, coping skills, and ability to maintain a positive outlook during treatment. This conference highlights the significance of psychological assessments and interventions in addressing the psychological well-being of cancer patients. By integrating a multidisciplinary approach into cancer care, healthcare professionals can better meet the holistic needs of individuals facing cancer and improve their overall treatment outcomes.

## WHO SHOULD JOIN THIS CONFERENCE?

**The National Conference on Psychotherapeutic Assessments and Interventions in Psycho-Oncology is ideal for:**

- **Medical & Healthcare Professionals:** General Physicians, Medical Oncologists/Oncologists, Nursing Officers/Professionals, Occupational Therapists, Palliative Care Specialists, Pediatricians, Physiotherapists, Radiologists
- **Mental Health Professionals:** Counselors, Psychiatric-Social Workers/Social Workers, Psychiatrists, Psycho-Oncologists, RCI Certified Clinical and Rehabilitation Psychologists, Therapists
- **Academic & Research Community:** MBBS Students, M.D. Students, Nursing Students, Research Scholars (Ph.D. & M.Phil.), Students in M.Sc. Oncology, Psychology, and related fields, University Faculty
- **Administrative & Policy Stakeholders:** Healthcare Administrators, Hospital Leaders, Public Health Officials
- **Support Organizations & Advocacy:** Corporate Wellness Providers/EAP advocates, International Delegates/Global health professionals, Multi-Rehabilitation Professionals, NGOs involved in cancer care, Patient Advocates and Survivors, Professional Bodies
- **Other Interested Parties:** Any individual interested in Psycho-Oncology

# NCPO-2025

## ORGANIZING CHIEF PATRONS

### CHAIRPERSONS



**Pratap Sharan**  
Professor & Head  
Department of Psychiatry  
AIIMS-New Delhi



**Sushma Bhatnagar**  
Professor & Head  
Department of Onco-  
Anaesthesia and  
Palliative Medicine  
IRCH, AIIMS-New Delhi



**Sameer Bakhshi**  
Professor & Head  
Department of  
Medical Oncology  
IRCH, AIIMS-New Delhi



**D N Sharma**  
Professor & Head  
Department of Radiation  
Oncology  
IRCH and NCI,  
AIIMS-New Delhi

### CO-CHAIRPERSONS



**Sujata Satapathy**  
Professor  
Clinical Psychology  
Department of Psychiatry  
AIIMS-New Delhi



**Latha Venkatesan**  
Professor & Principal  
College of Nursing  
AIIMS-New Delhi



**G. Padmaja**  
Professor & Head  
Centre for Health Psychology  
School of Medical Sciences  
University of Hyderabad

### ORGANIZING SECRETARY



**Barre Vijay Prasad**  
Assistant Professor  
Clinical Psychology  
Department of Psychiatry  
AIIMS-New Delhi



# NCPO-2025

## CO-ORGANIZING SECRETARIES



**Koushik Sinha Deb**  
Additional Professor  
Department of Psychiatry  
AIIMS-New Delhi



**Prabhat Singh Mallik**  
Additional Professor  
Medical Oncology  
IRCH, AIIMS-New Delhi



**Atul Batra**  
Additional Professor  
Medical Oncology  
IRCH, AIIMS-New Delhi



**Surendra Kumar Saini**  
Associate Professor  
Radiation Oncology  
IRCH, AIIMS-New Delhi



**Renu Sharma**  
Child Psychologist  
Department of Psychiatry  
AIIMS-New Delhi

## SCIENTIFIC COMMITTEE



**K P Cochhar**  
Professor & Head  
Department of  
Physiology  
AIIMS-New Delhi



**Seema Mishra**  
Professor  
Onco-Anaesthesia and  
Palliative Medicine  
IRCH, AIIMS-New Delhi



**Sachidanand Jee Bharti**  
Professor  
Onco-Anaesthesia and  
Palliative Medicine  
IRCH, AIIMS-New Delhi



**Raja Pramanik**  
Additional Professor  
Medical Oncology  
IRCH, AIIMS-New Delhi



**Brindha Sitaram**  
Psycho-Oncologist  
HCG Cancer Hospital  
Bangalore



**Yumnam Surbala Devi**  
Associate Professor  
College of Nursing  
AIIMS-New Delhi



**Simran Kaur**  
Additional Professor  
Department of  
Physiology  
AIIMS-New Delhi



**Swati Kedia Gupta**  
Assistant Professor  
Clinical Psychology  
Department of Psychiatry  
AIIMS-New Delhi



**Raghav Gupta**  
Assistant Professor  
National Cancer  
Institute (Jhajjar)  
AIIMS-New Delhi



**Monika Sabharwal**  
Tutor  
College of Nursing  
AIIMS-New Delhi

## TREASURER



**Prasuna Shanmukha Priya Lanka**  
Founder Vice President  
We Avec U Foundation



# NCPO-2025

## MEMBERS



**Ajesh Kumar T K**  
Associate Professor  
College of Nursing-AIIMS



**Krishna Kumar Sony**  
Associate Professor  
Department of Psychiatry  
PGIMER



**Vijayaraghavan**  
Clinical Psychologist  
JIPMER-Puducherry



**Vikas Sharma**  
Head & Associate Professor  
SGT University-Gurgaon



**Manoj Kumar Bajaj**  
Associate Professor  
Delhi University-New Delhi



**Shahzadi Malhotra**  
Associate Professor  
IHBAS-New Delhi

## PUBLICATION & AWARDS

## DELEGATION & COMMUNICATION



**Osheen Saxena**



**Mansi Chadha**



**Nidhi Parate**

Project Research Scientists  
Department of Psychiatry  
AIIMS-New Delhi



**Rekha Patel**

Clinical Psychologist  
Department of Psychiatry  
AIIMS-New Delhi



**Dharaa Gupta**



**Shreya Kulshreshtha**



**Akanksha Yadav**

Ph.D. Scholars  
Department of Psychiatry  
AIIMS-New Delhi



**Ratnakar**

## SPONSORSHIP & EXHIBITION

## HOSPITALITY

## VENUE MANAGEMENT



**Vidhi Khanna**

Project Research Scientists  
Department of Psychiatry  
AIIMS-New Delhi



**Jaspreet Kaur Mangat**



**Rachana Maurya**  
Research Associate



**Usha Devi**  
Project Research Scientist  
Department of Psychiatry  
AIIMS-New Delhi



**Saumya Dobhal**  
Clinical Psychologist



**Ishita Goyal**  
Project Research Scientists  
Department of Psychiatry  
AIIMS-New Delhi



**Aarushi Mathur**

# NCPO-2025

## ORGANIZING PARTNER: WE AVEC U FOUNDATION

### CO-ORGANIZING SECRETARY



**Sundeep Katevarapu**  
Founder President  
We Avec U Foundation

### TREASURER



**Prasuna Shanmukha Priya Lanka**  
Founder Vice President  
We Avec U Foundation

### PUBLICATION & AWARDS



**Sarbottam Raj**  
Research & Journal  
Coordinator



**Meghanaa Karanam**  
Research Assisstant



**Shweta Ahirwar**  
Counseling  
Psychologist &  
Trainer



**Nupur Agarwal**  
Program  
Coordinator &  
Trainer

### HOSPITALITY

### IT SUPPORT



**Usman Ali**  
Web Designer &  
Developer

### SPONSORSHIP & EXHIBITION



**Jahnavi Badarinath**  
Business Associate

### DELEGATION & COMMUNICATION



**Kashish Jha**  
Psychology and  
Operations  
Associate



**Krapesh Gawle**  
Content Writer

## THEME TRACKS & SUB-THEMES

### TRACK 1 : PEDIATRIC PSYCHO-ONCOLOGY

- Cancer and developmental milestones
- Epidemiology of childhood cancers
- Epidemiology of mental and behavioral disorders in pediatric cancers
- Neuro-cognitive, psychosexual, and socio-emotional impact on children with cancer
- Childhood cancers and physical self-esteem & self-concept.
- Childhood cancer survivors.
- Parents' perception, knowledge, attitudes, and behaviors in treatment-seeking
- Family and school-based psycho-oncology support services
- Quality of life in childhood cancers
- Disclosing or non-disclosing the illness to children: Why, when, and how?
- Psycho-oncology interventions for children and adolescents
- Integrated Model of psycho-oncology Support Services in Indian Hospitals
- Resilience and childhood cancer in different phases of treatment
- Catering psycho-oncology services to children with special needs
- Research and development in pediatric psycho-oncology: Tools, methodology, and assessment.
- Pediatric and Adult Radio diagnostics research in the field of Psycho-Oncology

### TRACK 2: PSYCHO-ONCOLOGICAL EVALUATIONS & INTERVENTIONS FOR ADULTS

- Cancer and major depressive disorders, anxiety disorders, and other mental-behavioral disorders
- Cancer and suicide, Covid-19
- Psycho-oncological aspects of cancer surgery
- Psychosocial impacts on Specific Cancers: Breast, prostate, pancreatic and liver, head & neck, and mouth cancer, multiple myeloma
- Cancer and reproductive health care, sexual functioning
- Screening comprehensive tools of assessment and evaluation
- General psychological evaluation of cancer patients
- Innovative Screening Tools: Latest developments in psychological instruments
- Cancer coping and Resilience
- Qualitative research in adult cancers
- Psycho-oncological aspects of the financial burden of cancer treatment
- Psychiatric emergencies in oncology patients
- Psychiatric medications and their effect on cancer patients.
- Evidence-based psycho-oncological interventions (Crisis management, CBT, JPMR, MBCT, DBT, MT, FT, Art and Music therapy, etc.) and supportive care
- Integrative Spiritual and Transcendental meditation practice in therapy
- Designing Psycho-oncological Screening tools and Interventions for the geriatric cancer population.

### TRACK 3: ONCOLOGY AND NURSING

- Effective communication with patients and caregivers
- Experience of breaking the bad news
- Cultural sensitivity in psycho-oncology nursing
- Nursing approaches to enhance resilience
- Ethical and legal issues in nursing care in oncology settings
- Case studies of successful interdisciplinary collaborative oncology nursing care
- Identifying patients with mental health conditions
- Technology & innovations in psych-oncology nursing
- Education and training of nurses in oncology services (psychological/medical / surgical)
- Nursing care for survivors and long-term psycho-oncology nursing services
- Home-based care in psycho-oncology nursing
- Radiation Oncology and Challenges
- Surgical Oncology and Challenges
- Medical Oncology & Challenges
- Postoperative Care Protocols in Nursing & Oncology



## TRACK 4: PALLIATIVE CARE & PSYCHO-ONCOLOGY

- Pediatric and Adult Palliative care: Current status, gaps, and needs in care.
- Mental health conditions among palliative care patients
- Psychological Interventions for Pain Management in Palliative Care
- Quality of Life through Palliative Care
- Interdisciplinary and Culturally sensitive approaches to Palliative Care
- Psycho-oncological assessments in palliative services
- Psycho-oncological models of psychological and behavioral interventions
- Palliative care models and Indian setup
- Hospice and Home-based palliative care services
- Feasibility, cost, and availability of integrative palliative services
- Making end-of-life more acceptable with religious and spiritual methods
- Reminiscence therapy and palliative care: present and future in India
- Innovations in Technology for Palliative Care
- Mourning and bereavement rituals: A new trend in palliative care service
- Ethical Considerations in Palliative Care

## TRACK 5: MODELS OF ONCOLOGY & INDIAN SYSTEM OF MIND-BODY FOCUSED MODELS

- Neuro-imaging and Radio-Diagnostics Psycho-Oncology Research
- Models of Psycho-oncology in different settings
- Role of Physiotherapy and Occupational Therapy and Cancer Rehabilitation
- Integrated data storage and accessibility in psycho-oncology research
- International and National Guidelines for Psycho-oncological Practices
- Genetic counseling in cancer care
- Cultural adaptation and validation of western and Asian models of oncological care
- Implementing mind-body techniques into cancer care
- Mindfulness-based meditation in Cancer Care
- Education and training models in Psycho-oncology and other fields of oncology
- Training and education of other professionals in psycho-oncology
- Multimodal treatment approaches in psycho-oncology and other related areas

## CALL FOR PAPERS

- The Conference includes scientific sessions of scientific papers /poster presentations, symposiums/ free papers/ debates, giving an equal chance for every delegate to share their research findings with the audience.
- The paper publication is subject to acceptance of the paper quality standards. The registration fee does not include the Article Processing Charges.
- Certificates will be provided to participants, session presenters, and chairpersons.

### For Guidelines of Abstract Submission (Scientific Papers/ Symposiums/ Posters/ Debates/ Free papers):

- Abstracts must be <= 250 words; A4 size word format, 2.0 spacing, APA 7 format.
- The abstract must include the Title, Author's name, and Institutional affiliation, which must include the Background, Objectives, Method, Results, Conclusions, and 3 keywords of the study.
- One person may submit ONLY ONE abstract as the first author and may submit a maximum of 3 abstracts as Corresponding Authors.
- Presenting authors must be registered participants. Only abstracts of authors who have paid their registration fees by 15th November 2024 will be scheduled for presentation and included for publication.
- The presenting author is required to ensure that all co-authors are aware of the content of the abstract and agree to its submission, before submitting the abstract.
- All accepted and selected abstracts will be given option to get it published in Peer reviewed Journal, or UGC Care Journal or Scopus indexed (Changes may apply)
- Abstracts must be submitted in English.
- Contact our team for instructions for preparation of presentations

**ALL THE ABSTRACT NEED TO BE SUBMITTED TO OUR WEBSITE ONLY: <https://ncpo2025.in/>**

**Please Note:** Please follow the guidelines mentioned above, otherwise the abstract will not be considered.

Early Bird Deadline for Abstract Submission	<b>31st October 2024</b>
Last Date for 2nd Call of Abstract Submission	<b>15th November 2024</b>
Deadline for Full Paper Submission	<b>30th November 2024</b>

## PROPOSAL FOR PRESENTATION

Participants are encouraged to submit proposals under various categories, including workshops, symposia, roundtable discussions, debates, paper presentations, and poster displays. Each category provides a unique opportunity to contribute to the conference's aim of fostering professional growth through psychological insights. Below are the details for each submission type:

- **1. Workshops (60 minutes):** We welcome proposals for practical, hands-on workshops aimed at oncologists, psychologists, educators, researchers, and practitioners. These workshops should focus on innovative techniques, tools, or methods related to applied psychology that can enhance professional practice. Presenters are encouraged to offer experiential learning and practical applications that attendees can directly implement in their professional environments. The workshop should be engaging, interactive, and aligned with the conference's main theme.
- **2. Symposia (90 minutes):** Proposals for symposia should consist of up to four interconnected presentations on a specific aspect of the conference theme. Each presentation should address a unique angle of the selected topic, fostering a comprehensive discussion on innovative approaches or research developments in applied psychology. Multidisciplinary panels are highly encouraged, and the convenor of the symposium must be a psychologist. The goal is to promote deep, focused discourse on cutting-edge psychological applications and professional practices. The symposium organizer should submit the symposia abstract on behalf of all presenting authors. The symposium abstract should follow the requirement of individual submissions. The symposium organizer should also submit a supplementary file which contains information of each presentation, including the major theme of the symposium. Do not submit the Symposium Proposal if you do not have all presentations from your symposium participants.
- **3. Roundtable Discussions (45 minutes):** We invite proposals for roundtable sessions designed for in-depth discussion on specific topics within themes of conference. Presenters will initiate a dialogue on relevant research, trends, or professional challenges and engage participants in thoughtful discussion. These intimate sessions are intended to encourage sharing of ideas, elicit feedback, and build collaborative networks among professionals.
- **4. Debates (45 minutes):** Debate proposals should focus on current and potentially controversial issues related to the conference theme. Each debate should feature two opposing perspectives on a specific question related to the conference theme. The debate format will allow for structured argumentation, rebuttals, and audience participation. Proposals should clearly outline the topic and propose speakers or teams representing contrasting viewpoints, fostering critical thinking and exploration of diverse perspectives.
- **5. Paper Presentation (10 minutes including questions from participants):** Paper presentation proposals are welcome from researchers and practitioners. Each paper should be grounded in recent research or practical innovations. Presenters will have 10 minutes to present their findings, followed by a brief Q&A session. Abstracts should be concise, around 200 words, detailing the aim, methodology, and results of the study or practice. Selected papers will be eligible for a best presentation award and a certificate of appreciation.
- **6. Poster Presentations:** Proposals for poster presentations should feature visual displays of research findings, new practices, or theoretical models in applied psychology. Posters should be clear, and engaging, and effectively communicate the essence of the work in a visual format. Each poster must be accompanied by a brief synopsis, and presenters are encouraged to provide additional materials like brochures or handouts. Poster dimensions should not exceed 30 x 20 inches. Best poster awards will be given based on content, clarity, and presentation.
- **7. Publication of Papers:** Full paper submissions are invited for publication consideration in the peer-reviewed Journal, UGC Care and Scopus Indexed. Papers should be approximately 5000 words and follow APA 7th edition guidelines, including tables and references. The submitted papers will undergo a peer review, and selected papers will be published in the conference's special edition. If a paper is selected for publication, the author will be notified separately.
- **8. Oral Poster Presentation (7 minutes):** Each presenter will have 7 minutes to provide an overview of their poster, summarizing key points such as research objectives, methodologies, findings, and practical implications. The oral presentation will be followed by a brief Q&A session, allowing the audience to engage with the content. Posters should visually depict the research in an attractive and accessible format, and the oral explanation should highlight the essential aspects of the work. Abstracts for the oral poster presentations should be approximately 150-200 words, providing a snapshot of the topic being presented. This format is ideal for engaging participants with visually rich content in a limited time.
- **Scholars interested in presenting research papers/ symposiums/ posters/ debates on the theme or any sub theme of the conference are required to submit their abstract on our website only: <https://ncpo2025.in/>**

## NCPO AWARDS

The **National Conference on Psychotherapeutic Assessments and Interventions in Psycho-Oncology (NCPO 2025)** will host an awards ceremony to recognize exceptional contributions across participating departments. Approximately 20 awards will be distributed, categorized into thematic areas. Each department's achievements will be highlighted, encouraging continued innovation and excellence in psycho-oncology.

### 1. Award - Clinical Field

- **Significant contribution in the field of psycho-oncology (Individual & Organisation)**

#### Who can apply

- Organizations and Individual clinical practitioners practicing in the field of psychology/Medical Oncology/ Radiotherapy/Onco-anesthesia & Palliative Care/Psychiatry/Nursing

#### Criteria for Awards (tentative)

1. Establishment/integration of psychosocial support/care into hospital/clinic working for cancer patients
2. No. of direct beneficiaries
3. Staffing pattern, number, variety, and quality of staff
4. No. of professionals educated and trained
5. Type of services- for one or more - terminal patients, regular patients, survivors
6. Efforts in the community to reach out
7. Advocacy and policy efforts/contribution
8. Novel practices (technological/non-technological) to improve services

### 2. Award - Research Field

- **Significant contribution to the research in the field of psycho-oncology (Individual & Organisation)**

#### Who can apply

- Organizations and Individual researchers in the field of Psycho-Oncology

#### Criteria for Awards (tentative)

1. h-index
2. No. of publications
3. No. of patents/Intellectual property rights
4. No. of products developed/deployed
5. No. of paper awards in psycho-oncology/Medical Oncology/Radiation Oncology/ Onco-Anesthesia and Palliative Medicine/Psycho-Oncology Nursing
6. No. of memberships of mental health professional bodies

## PUBLICATION & AWARD OPPORTUNITIES

#### Categories of Publications:

UGC Care Listed Journal

Taylor and Francis Book

ISSN Registered Peer Reviewed Journal

#### Categories of Awards:

Best Oral Paper Presentation (2 for each track)

Best Poster Presentation (2 for each track )

## PUBLICATION PARTNERS



**Taylor & Francis Group**  
an informa business

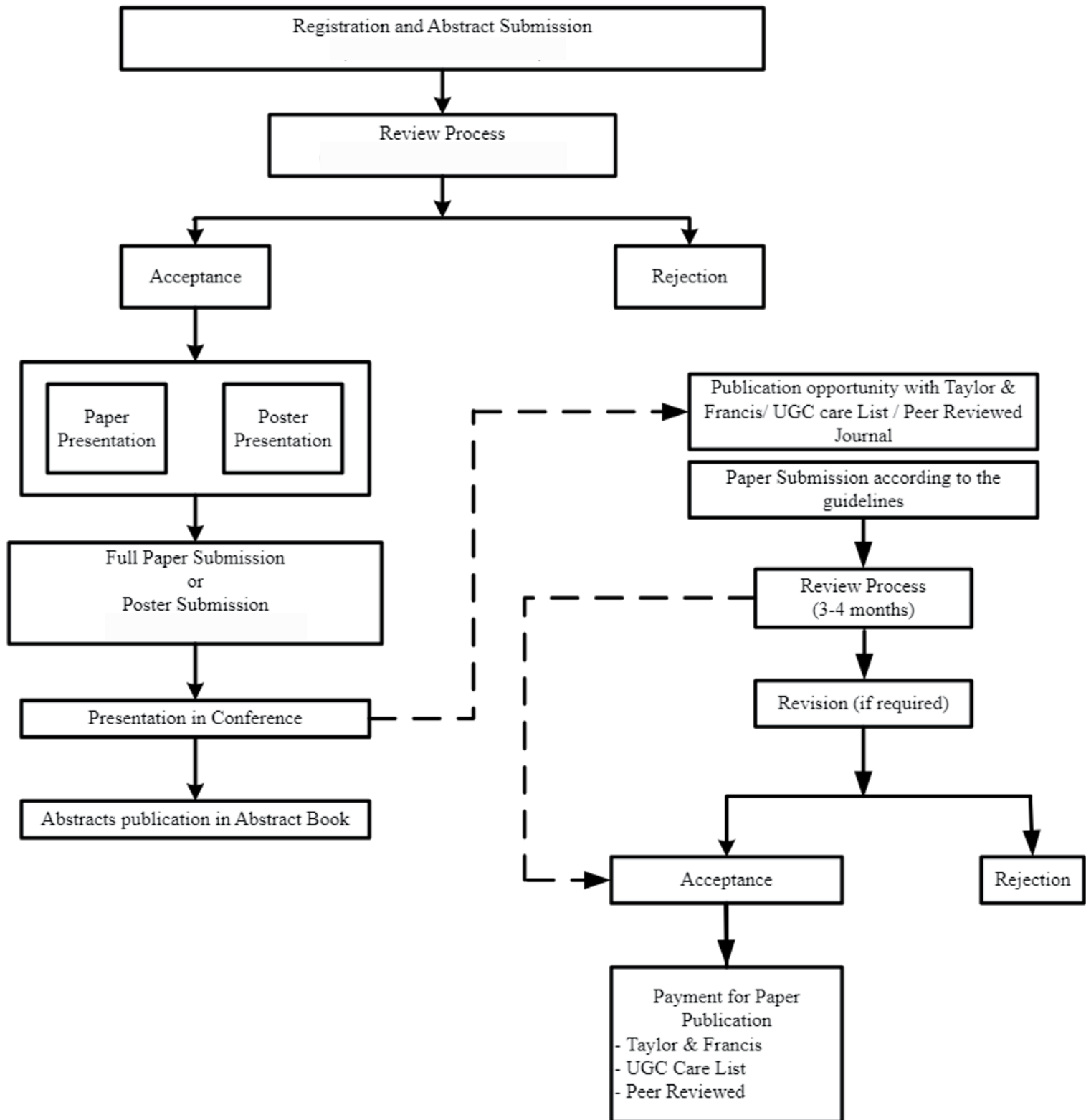


**CRC Press**  
Taylor & Francis Group



## PROCESS OF ACCEPTANCE

The following process will be considered for paper acceptance and publication:



**Note:** Selected papers from the presentation list will be recommended for Taylor and Francis conference proceeding book. The payment for the same is separate and will be charged on acceptance of paper by organising and publishing team.

# NCPO-2025

## RCI-CRE STATUS APPROVED

Only RCI-registered practitioners are eligible for CRE Points. They are required to complete both the following registrations

1. **Conference Registration:** Register and Pay the fees at the NCPO 2025 website: <https://ncpo2025.in/>.

2. **Registration on RCI Website:** Open RCI website (<https://rehabcouncil.nic.in/>) ----> CRE ----> CRE Calendar ----> Click on ok ----> Enter "AllMS" in the search button ---> following window will open ---> Click on "Link for Registration of participant"

Or

Click on the link here: <https://rciregistration.nic.in/rehabcouncil/crestudentreg.jsp>

### Guidelines:

- Delegates should complete the registration on both the websites. Filling up of Registration form ONLY ON RCI Website will not give delegate the entitlement to the conference or the RCI-CRE Points. Delegated have to compulsorily register for NCPO Conference as well on: <https://ncpo2025.in/>.
- Delegate shall apply online on RCI's website.
- The registration portal on RCI website is only accessible till 2nd January 11:59PM. Any registration post that is not accepted. Thus any walk-in delegate have to report well in time to ensure that their registration is done before the start of the program.

Category	RCI-CRE Points
Participation as Delegates for 3 days in NCPO 2025	6 points per day
Participation as Resource Person/Keynote Speaker in NCPO 2025	15 points (max)
Participation for Paper Presentation	10 points (max)
Participation for Poster Presentation	10 points (max)

## CONFERENCE RELATED LINKS

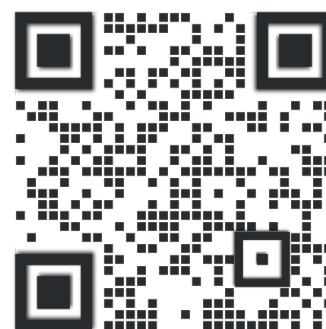
**WEBSITE:** [www.ncpo2025.in](http://www.ncpo2025.in)

**REGISTRATION LINK:** [Click here to register](#)

**COMMON WHATSAPP GROUP:** [Click Here to join](#)

**EMAIL ID:** [info@ncpo2025.in](mailto:info@ncpo2025.in)

**CONTACT NO:** 9169179918



## REGISTRATION DETAILS

Delegate category	Early Bird Discount-I till 30th September 2024	Early Bird discount- II From 1st Oct to 15th Nov 2024	Regular Pricing From 15th Nov 2024	On-Spot
Students / Research Scholar	Rs 2500	Rs 3500	Rs 4000	Rs 4500
Delegates	Rs 4000	Rs 5000	Rs 5500	Rs 6000
International delegates	\$100	\$150	\$180	\$200

- The Registration fees mentioned above are per person and are exclusive of travel and accommodation expenses.
- All the payments are to be made through payment details given in the registration form link. No refund will be issued.
- For the 3 days, lunch and tea/coffee (once a day) would be provided to the delegates along with the admissions to inaugural function, scientific sessions and valedictory function.
- Conference kit includes conference bag, notepad, pen, ID Card (only for those attending the conference physically).
- The Organizing Committee does not bear any responsibility of the accommodation of delegates. Suggestions of the hotels nearby will be given.
- For delegates attending the conference offline, Certificates will be distributed from 3rd day afternoon.

## PAYMENT DETAILS

**Account Holder-** We Avec U  
**Account Number-** 924020049246422  
**IFSC-** UTIB0004257  
**Branch-** Sector 25, Noida  
**Bank Name-** Axis Bank  
**Account Type-** Current

**UPI ID:**  
drksaryan-11@oksbi

Scan and Pay



9717063414@okbizaxis



# NCPO-2025

## ABOUT THE ORGANIZING PARTNER: We Avec U Foundation

With over nine years of unwavering commitment, we've been pioneering innovative solutions to address the pressing challenges in healthcare and mental health in India. These two vital sectors, often overlooked, are at the heart of our mission. We strive to empower the healthcare industry and challenge the stigma surrounding mental health, driving positive change from the grassroots level.

Our foundation is working on multiple initiatives related to Healthcare Industry and mental health awareness. These initiatives include healthcare awareness programs through conferences and workshops. Advocacy for doctors and healthcare professionals through awareness campaigns. Counseling and therapy sessions in rural and backward areas. Cancer awareness programs, support groups, mental health awareness workshops in corporates, psychoeducation seminars with children, mental health advocacy programs, and more. Our mission is to empower individuals by promoting the importance of healthcare and mental health. We aim to create a society where these vital sectors are valued and supported, and where professionals are recognized for their crucial role in well-being.

Registration No. 1993 Govt. of Delhi, Est. 2015, Unique ID- DL/2021/0282156, Registered under Govt. of India Trusts Act-1882, Ministry of Corporate Affairs- CSR 1 and NITI Aayog Govt. of India, ISO 2015:9001, 12A & 80G TAX exemption available.

Website: <https://weavecu.org/> Email ID: [sundeepek@weavecu.org](mailto:sundeepek@weavecu.org)

### Our Initiatives:

- 💡 Advocacy for Healthcare Professionals
- 💡 Spandan (Psychoeducation at Juvenile Homes)
- 💡 CAPE (Cancer Awareness and Psychoeducation)
- 💡 Women's Emancipation Program
- 💡 Let's Talk: Mental Health For All
- 💡 Manobal (Supporting Men's Mental Health)



### Contact Details:

9169179918 / 8448789608 | [trust@weavecu.org](mailto:trust@weavecu.org)

[www.weavecu.org](http://www.weavecu.org) / [www.weavecu.com](http://www.weavecu.com)